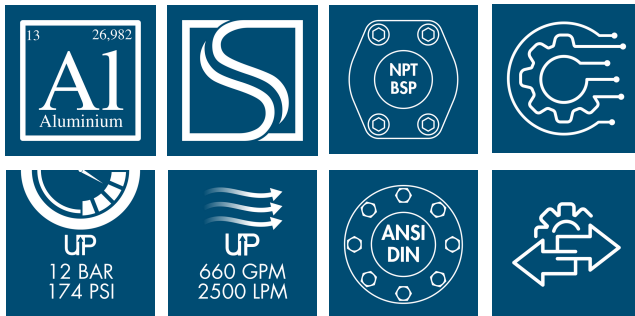


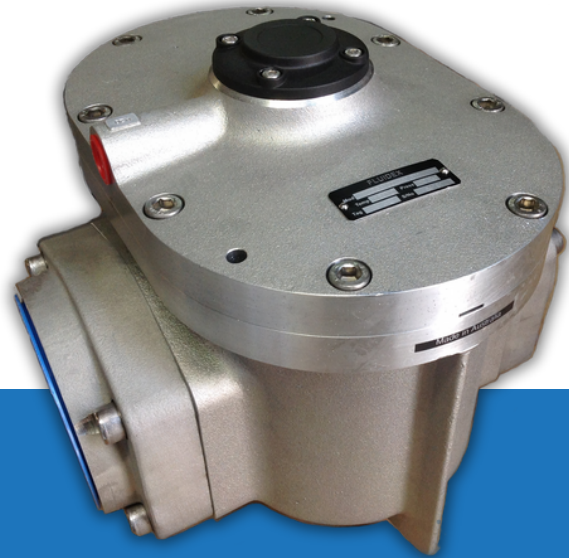
LARGE OVAL GEAR FLOWMETER

Fluidex series LOGF is a Positive Displacement Flow Meter with large capacity. The meters have two rotating gears in oval-shape. A fixed amount of the liquid passes between the gear teeth and through the meter after each revolution. The flow rate is identified by the number of shaft rotations. LOGF are used in a wide range of applications where accurate measurement of liquid is required.



SPECIFICATIONS

LOGF	080	080E	100	100E
Nominal Size	3" (80mm)	3" (80mm)	4" (100mm)	4" (100mm)
Nominal Flow @ 3cP (1)	10-200 GPM 35-750 LPM	13-260 GPM 50-1000 LPM	20-400 GPM 75-1500 LPM	40-660 GPM 150-2500 LPM
Accuracy @ 3cP	±0.5% of reading (±0.2% of reading w/ optional RT14 w/ non-linearity correction)			
Repeatability:	Typically ± 0.03% of reading			
Temp. Range:	-40°C - +150°C (-40°F - +300°F)			
ELECTRICAL				
Output Pulse Resolution:	Pulses / gallon (Pulses / L) - Nominal			
Reed Switch:	10 (2.65)	5.68 (1.55)	4.15 (1.1)	2.1 (0.56)
Hall Effect:	40.5 (10.7)	22.7 (6.0)	16.6 (4.4)	8.5 (2.24)
QP Quadrature Hall	20 (5.33)	11.4 (3.0)	8.3 (2.2)	4.24 (1.12)
Reed Switch Output:	30Vdc x 200mA max. (Max. thermal shock 18°F [10°C] / min.)			
Hall Effect Output (NPN)	3 wire open collector. 5-24V (dc) max., 20mA max.			
Optional Outputs	4-20mA, Scaled pulse, quadrature pulse, flow alarms or 2-stage batch control			



FEATURES

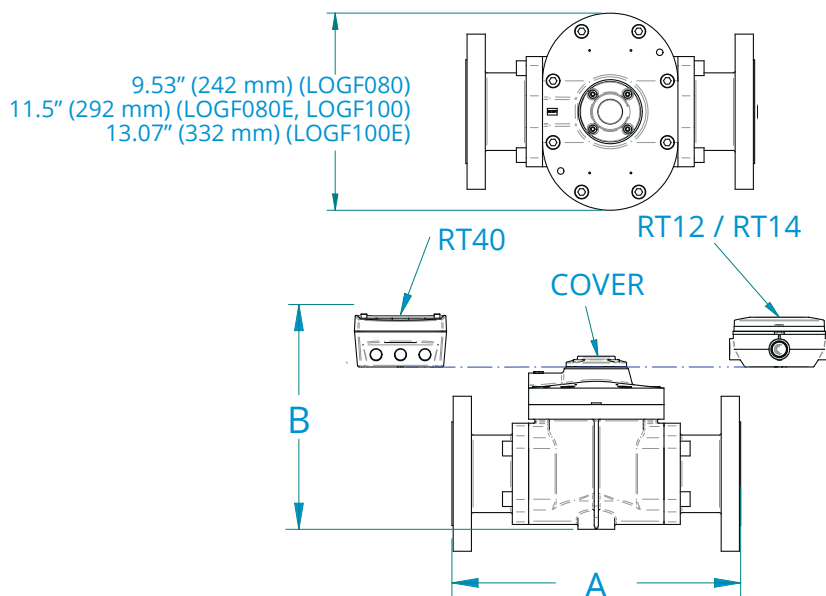
- Accurate flow measurement with high repeatability for precise process control
- Suitable for measuring the flow of a wide range of fluids, including thick and non-conductive liquids.
- Can measure bi-directional flow, offering added versatility in flow measurement applications.
- Features screwed or flanged end connections (NPT, BSP, ANSI and DIN) to suit various installation requirements.
- Features a wide range of electronic registers, including mechanical registers and electronic displays, to suit different user preferences and requirements.

PRESSURE RATING

LOGF	080	080E	100	100E
Aluminium	174 psi (12 Bar)	174 psi (12 Bar)	145 psi (10 Bar)	145 psi (10 Bar)
Stainless Steel	174 psi (12 Bar)			
Filtration	40 mesh [400 µm]			

1. Maximum flow is to be reduced as viscosity increases. Max recommended pressure drop is 14.5 psi (1 bar).

DIMENSIONS

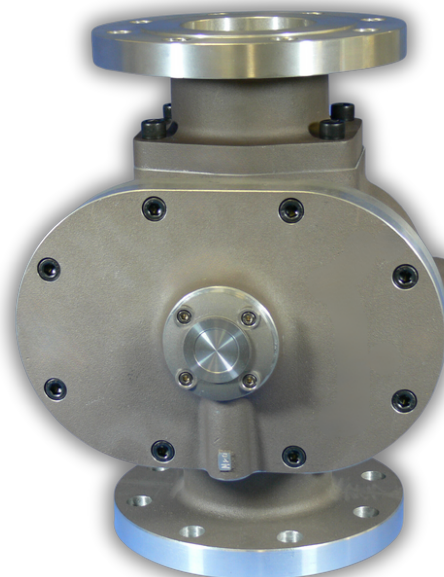


	A				
LOGF	080A	080S	080E	100	100E
ANSI150 / DIN16	13.9" (354mm)	13.9" (354mm)	15" (382mm)	15.3" (388mm)	16.3" (414mm)
BSP / NPT	10.5" (266mm)	10.5" (266mm)	11.6" (294mm)	11.6" (294mm)	12.6" (320mm)
	B				
RT12/RT14 GRN	10.2" (260mm)	10.1" (257mm)	10.9" (277mm)	12.7" (322mm)	15.7" (399mm)
RT40	10.3" (264mm)	10.2" (260mm)	11" (281mm)	12.8" (326mm)	15.9" (403mm)
Cover	8.4" (213mm)	8.1" (206mm)	9" (229mm)	10.7" (274mm)	13.9" (352mm)

All dimensions are $\pm 0.079"$ (± 2 mm)

TYPICAL APPLICATIONS

- Fuel additive injection
- Fuel consumption measurements
- Diesel injector/pump test equipment
- Water treatment chemical dosing (flocculants, surfactants, biocides, etc.)
- Corrosion inhibitor dosing
- Demineralised / RO water dosing or dispensing
- Monitoring of oil or grease lubricants
- Molasses
- Clean Fluids
- Oil-Based Paints
- Chemical Additive Injection



METER SELECTION MATRIX AND ORDER CODE

1		Series
	LOGF	Large Oval Gear Flowmeter
	OM	Explosion Proof Meters
2	SIZE	
	080	3 inch (80mm) - 10-200 GPM (35-750 LPM)
	080E	3 inch (80mm) Extended - 13-260 GPM (50-1000 LPM)
	100	4 inch (100mm) - 20-400 GPM (75-1500 LPM)
	100E	4 inch (100mm) Extended - 40-660 GPM (150-2500 LPM) (Only Available with Aluminium Rotors)
3		Body Material
	A	Aluminium
	E	Extended Flow Aluminium
	S	Stainless steel 316L (080 Only)
4		Rotor Material / Bearing Type
	00	PPS (not for +150°C (+300°F) / No Bearing
	10	Keishi cut PPS (not for +150°C (+300°F) / No Bearing
	44	Aluminium / Hardened Steel Roller (100E Only)
	51	Stainless Steel / Carbon Ceramic (080 Only)
	71	Keishi Cut Stainless Steel (For high viscosity) / Carbon Ceramic
5		O-ring Material
	1	FKM (Viton™) 5° F minimum (-15° C)
	3	PTFE encapsulated FKM (Viton™) 5° F minimum (-15° C)
	4	Buna-N (Nitrile), -40° F minimum (-40° C)
6	-	Temperature Limit
	2	250° F (120° C) max.
	3	300° F (150° C) max. Hall Effect, (080 Only)
	5	250° F (120° C) max. Includes Integral Cooling Fin
	8	176° F (80° C) max. Meters with integral instruments
7		Process connections
	0	No fittings
	1	BSPP (G) female threaded (ISO 228)
	2	NPT female threaded
	4	ANSI 150 RF Flanged
	6	PN16 DIN Flanged

8		Cable Entries
	1	M20 x 1.5mm (M16 x 1.5mm for R4 Option)
	2	1/2 inch NPT
	6	3x 16mm drilled holes (for R7 + F instruments only)

9		Integral options
		Combination Reed Switch and Hall Effect Sensor
	SS	Stainless Steel terminal cover
	RS	Reed switch only - To suit IS Installations
	E1	Explosion Proof Exd IIB T3...T6 (Aluminium & Stainless Steel meters)
	E2	Explosion Proof Exd I/II B T3...T6 (Stainless Steel meters only)
	QP	Quadrature pulse (2 NPN phased outputs)
	Q1	Combination of E1 + QP
	H1	Combination of E1 + HR
	R4	RT40 rate totalizer with backlit large digit LCD [scalable pulse Output, backlight]
	R5	RT14 backlit rate totalizer with all outputs (GRN Housing)
	R7	RT40 backlit rate totaliser in GRN housing
	B11	EB11 dual stage batch controller in GRN housing
	F115	F115 bi-directional flowrate / totalizer, 4-20mA and pulse outputs in a GRN Housing
	F18	F018 backlit flowrate / totalizer, pulse, 4-20mA, 10 point linearization, HART
	F18IS	F018 backlit flowrate / totalizer, pulse, 4-20mA, 10 point linearization, HART. IS
	F130	IS F130, 2-stage batch controller
10		Display
		Litres (Default)
	G	US Gallons

EXAMPLE

1	2	3	4	5	-	6	7	8	9	10
LOGF	100	A	00	1	-	8	2	1	R7	

For more information about FLUIDEX
flowmeters, visit www.fluidex.com.au
or contact sales@fluidex.com.au

FLUIDEX PTY LTD
PO BOX 4131, LUGARNO
NSW 2210 | AUSTRALIA
T +61 2 8519 6335

LOGF-DS-07-ENG-01/24
Specifications are subject to change without notice

